

# Hoshizaki America, Inc.

## Modular Crescent Cuber

### Models

KM-5 I5MAH

KM-5 I5MWH

KM-5 I5MRH



“A Superior Degree  
of Reliability”

[www.hoshizaki.com](http://www.hoshizaki.com)

## PARTS LIST



Number: 71274  
Issued: 1-28-2008  
Revised: 8-3-2009

# CONTENTS

Auxiliary Codes.....	3
Note About Ordering Parts .....	3
Material Abbreviations .....	4
A. Ice Cuber Assembly .....	5
KM-515MAH .....	5
KM-515MWH.....	8
KM-515MRH.....	10
B. Refrigeration Circuit.....	12
KM-515MAH.....	12
KM-515MWH.....	16
KM-515MRH.....	20
C. Water Circuit.....	24
D. Control Box Assembly.....	27
E. Label Location .....	29
KM-515MAH.....	29
KM-515MWH.....	31
KM-515MRH.....	33
F. Front Panel Assembly.....	35
G. Top Panel Assembly .....	36
H. Pump Motor Assembly.....	37
J. Control Assembly .....	38
K. Accessories & Packaging .....	39

## Auxiliary Codes

<b>KM-515MAH</b>	S-0	October 2007
	T-0	April 2008
	U-1	January 2009
	U-2	February 2009
	U-3	August 2009

<b>KM-515MWH</b>	S-0	November 2007
	T-0	February 2008
	U-1	January 2009
	U-2	February 2009
	U-3	August 2009

<b>KM-515MRH</b>	S-0	October 2007
	T-0	May 2008
	T-1	October 2008
	U-1	January 2009
	U-2	February 2009
	U-3	August 2009

## Auxiliary Code Breakdown

The auxiliary code is the first two characters in the serial number. The first character indicates the year. Years progress or regress in alphabetical order. The series runs from "A" through "V" and the letters "I" and "O" are skipped. The second character indicates significant part changes within a year. Base is "0" and this number advances for each change. In cases where there is a letter in parentheses, this designates the month. This is the last character in the serial number. The series runs from "(A)" through "(M)" and the letter "(I)" is skipped. This designation is only included when identifying a parts change within an auxiliary code.

## Note About Ordering Parts

Most assemblies cannot be ordered as complete units; parts in the assemblies generally must be ordered separately.

## Material Abbreviations

### ALUMINUM

AL = Aluminum

### COPPER

CU = Copper

### PLASTIC

ABS = Acrylonitrile -butadiene - styrene  
AC = Polyacetal  
EVA = Ethylene vinyl acetate  
PA = Polyamide = Nylon  
PC = Polycarbonate  
PE = Polyethylene  
PES = Polyester  
PETP = Polyethylene terephthalate = Tetlon  
PP = Polypropylene  
PS = Polystyrene  
PTFE = Polytetrafluoroethylene = Teflon  
PUR = Polyurethane  
PVC = Polyvinyl chloride

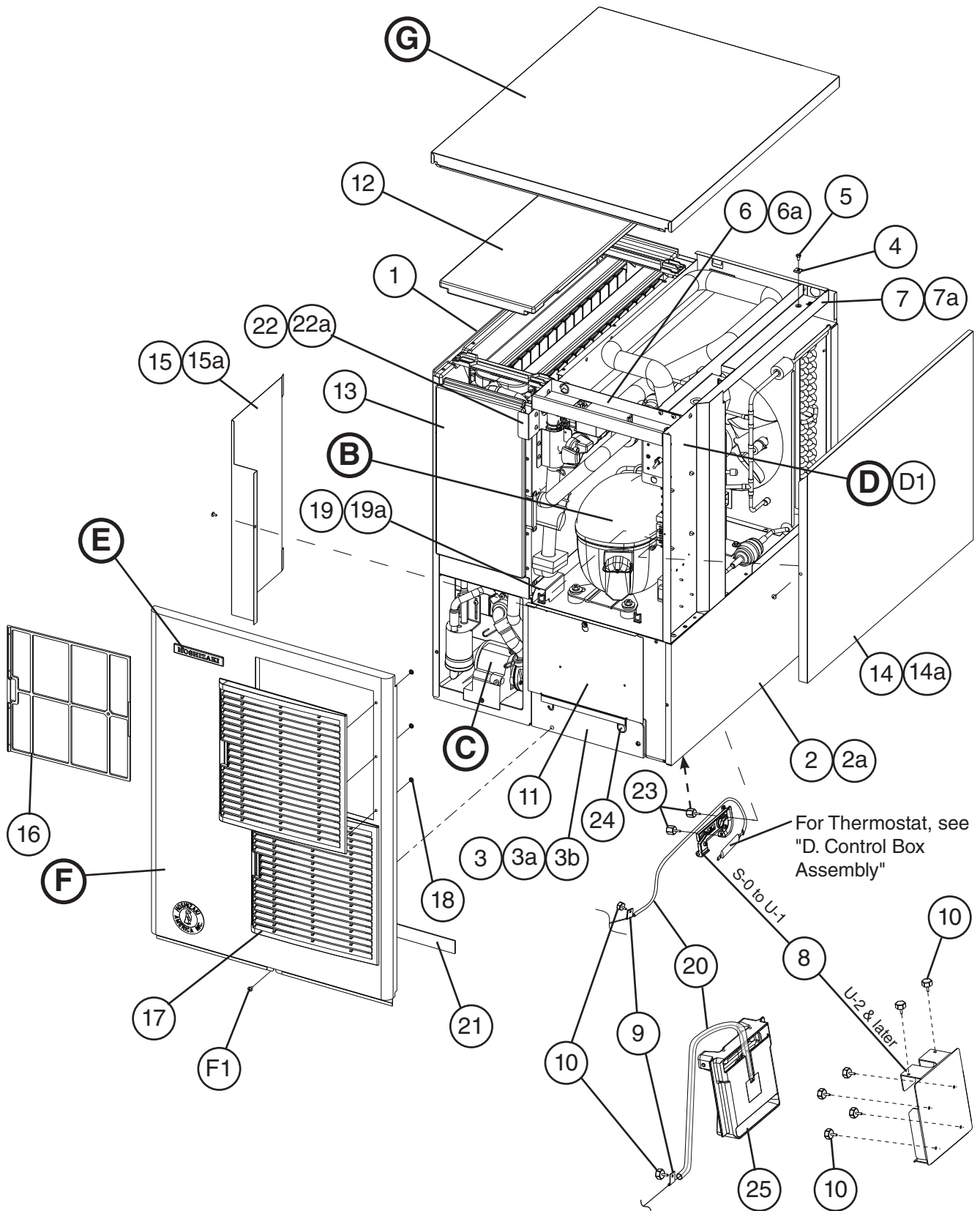
### RUBBER

VN = Vinyl Nitrile  
EPDM = EP rubber  
NBR = Nitrile butadiene rubber  
NR = Natural rubber  
NP = Neoprene  
SI.R = Silicone rubber  
SY.R = Synthetic rubber  
EPH = Epichlorohydrin

### STEEL

GS = Galvanized steel  
SS = Stainless steel  
PS = Plated steel  
PAS = Primed steel

**A. Ice Cuber Assembly**  
**KM-515MAH**  
 S-0 to U-3

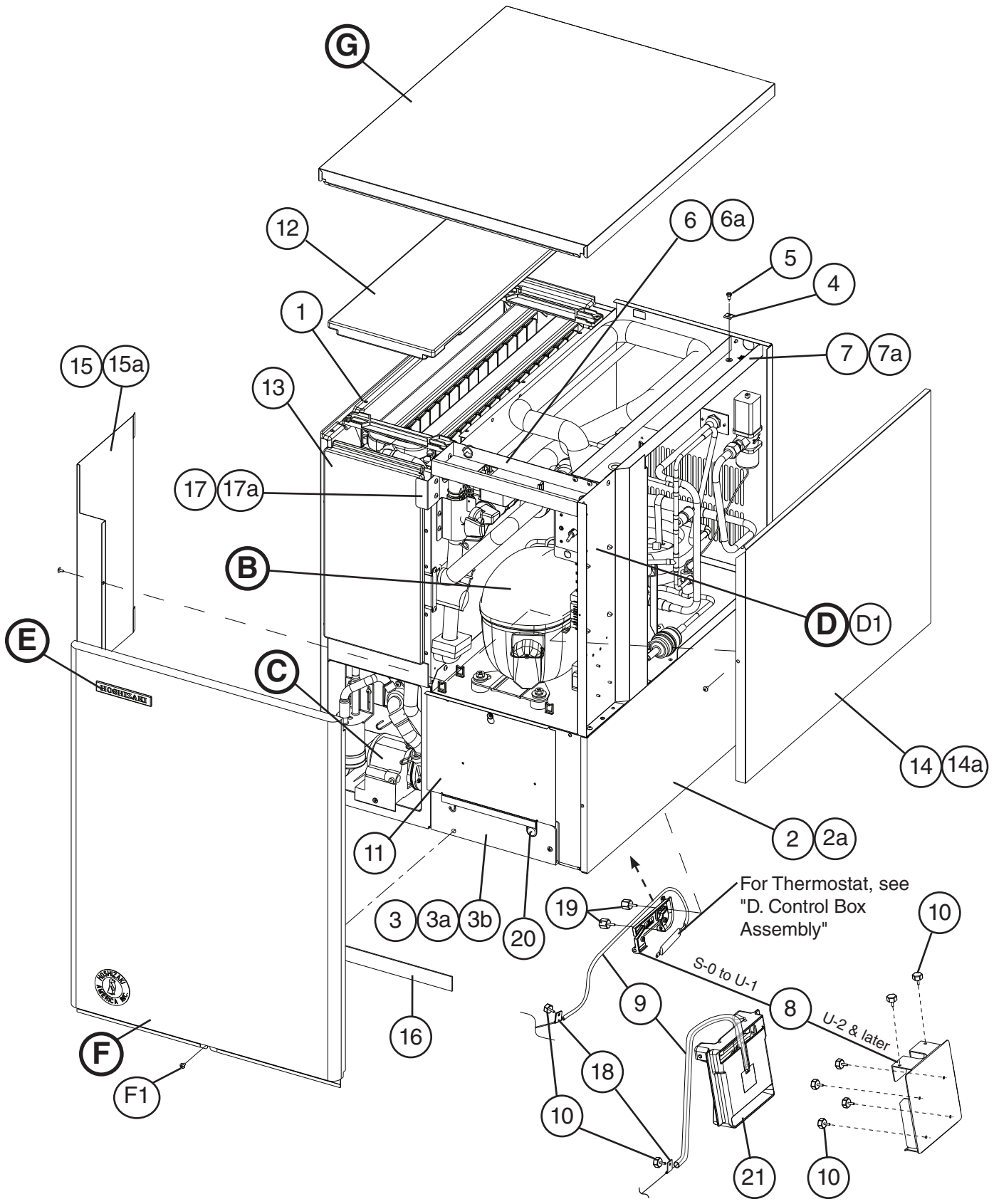


Title: **A. Ice Cuber Assembly** Model: **KM-515MAH**

Index No.	Description	Material or Model Number	Part Number	Required Number									
				S-0 T-0 (A-L)	T-0 (M) U-1	U-2	U-3						
B	Refrigeration Circuit	-	1A1406A01	1	-								
			1A1639A01		1	1	1						
C	Water Circuit	-	1A0283A05	1	1	1	1						
D	Control Box Assembly	-	2A4374A01	1	1	-							
			2A4374A03			1	1						
D1	T2 Screw	4x8	7P31-0408	4	4	4	4						
E	Label Location	-	3A4597A01	1	1	-							
			3A5038A01			1	-						
			3A5561A01					1					
F	Front Panel Assembly	SS	2A3767G01	1	1	1	1						
F1	Truss Head Screw	4x8, SS	7C32-0408	1	1	1	1						
G	Top Panel Assembly	SS	3A3878A01	1	1	1	1						
1	Evaporator Case	-	1A0579G06	1	1	1	1						
2	Base	-	2A2146G12	1	1	-							
			2A4319G07			1	1						
2a	FT Screw	4x8	7F31-0408	7	7	7	7						
3	Frame	-	3A2503G01	1	1	1	1						
3a	Truss Head Screw	4x8, SS	7C32-0408	1	1	1	1						
3b	Truss Head Screw	4x25, SS	7C32-0425	2	2	2	2						
4	Square Washer	BRASS	433537-02	1	1	1	1						
5	Screw-Grounding	BRASS	433304-02	1	1	1	1						
6	Top Frame	GS	3A3741-01	1	1	1	1						
6a	T2 Screw	4x8	7P31-0408	4	4	4	4						
7	Side Frame	GS	3A2782-01	1	1	1	1						
7a	T2 Screw	4x8	7P31-0408	2	2	2	2						
8	Bulb Holder	-	3A3903-01	1	1	-							
	Bin Control Switch Mount		3A4463-01			1	1						
9	Strap	-	435487-01	1	1	1	1						
10	Thumbscrew	SS, ABS	415949G10	1	1	7	7						
11	Base Cover	SS	321525G01	1	1	1	1						
12	Top Insulation	PP	215730G01	1	1	1	1						
13	Front Insulation	PP	215731G01	1	1	1	1						
14	Side Panel (R)	SS	2A2117G01	1	1	1	1						
14a	T2 Screw	4x8, SS	7P32-0408	1	1	1	1						
15	Control Box Cover	GS	3A2476-01	1	1	1	1						
15a	T2 Screw	4x8	7P31-0408	1	1	1	1						
16	Air Filter (A)	ABS	2A2062G01	2	2	2	2						
17	Louver (A)	ABS	1A0547-01	2	2	2	2						
18	Push Retainer	-	4A2414-01	6	6	6	6						
19	Barrier	GS	4A0362-01	1	1	1	1						
19a	T2 Screw	4x8	7P31-0408	2	2	2	2						
20	Silicone Hose	L=380	7730I3812	1	1	-							
		L=325	7730-1114			1	-						
21	Gasket	L=554	4A0808L02	1	1	1	1						
22	Barrier-Insulation	GS	4A1167-01	1	1	1	1						
22a	T2 Screw	4x8	7P31-0408	2	2	2	2						

Title: <b>A. Ice Cuber Assembly</b> Model: <b>KM-515MAH</b>											
Index No.	Description	Material or Model Number	Part Number	Required Number							
				S-0 T-0 (A-L)	T-0 (M) U-1	U-2	U-3				
23	Thumbscrew	SS, ABS	415949G11	2	2	-					
24	Capillary Ring	-	425307-01	1	1	1	-				
			425307-02				1				
25	Bin Control	-	2A4393G01			1	1				

**A. Ice Cuber Assembly**  
**KM-515MWH**  
 S-0 to U-3

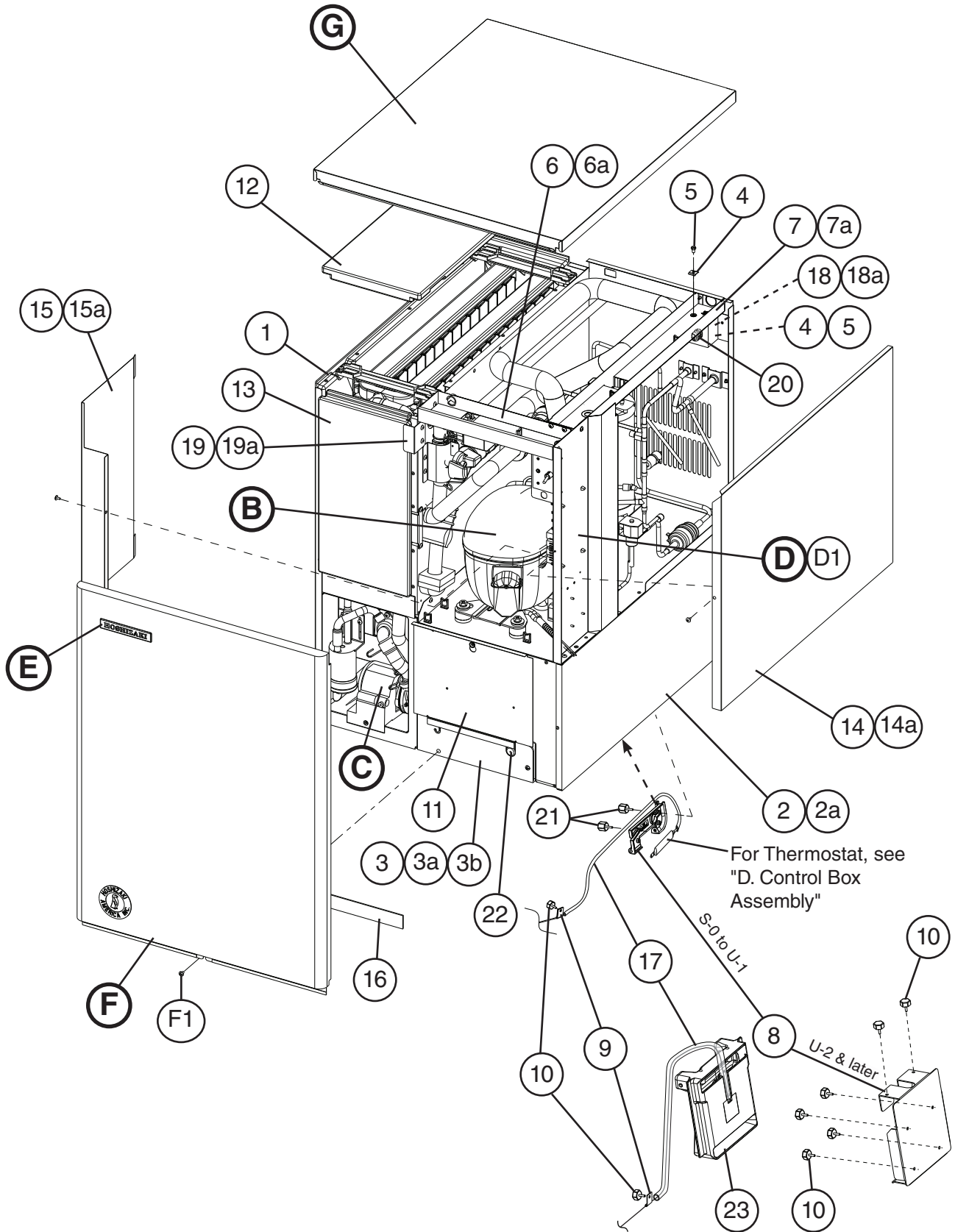




Title: **A. Ice Cuber Assembly** Model: **KM-515MWH**

Index No.	Description	Material or Model Number	Part Number	Required Number									
				S-0 T-0 (A-L)	T-0 (M) U-1	U-2	U-3						
B	Refrigeration Circuit	-	1A1408A01	1	-								
			1A1640A01		1	1	1						
C	Water Circuit	-	1A0283A05	1	1	1	1						
D	Control Box Assembly	-	2A4374A02	1	1	-							
			2A4374A04			1	1						
D1	T2 Screw	4x8	7P31-0408	4	4	4	4						
E	Label Location	-	3A4598A01	1	1	-							
			3A5040A01			1	-						
			3A5562A01					1					
F	Front Panel Assembly	SS	2A2150G01	1	1	1	1						
F1	Truss Head Screw	4x8, SS	7C32-0408	1	1	1	1						
G	Top Panel Assembly	SS	3A3878A01	1	1	1	1						
1	Evaporator Case	-	1A0579G06	1									
2	Base	-	2A2146G17	1	1	-							
			2A4319G11			1	1						
2a	FT Screw	4x8	7F31-0408	7	7	7	7						
3	Frame	-	3A2503G01	1	1	1	1						
3a	Truss Head Screw	4x8, SS	7C32-0408	1	1	1	1						
3b	Truss Head Screw	4x25, SS	7C32-0425	2	2	2	2						
4	Square Washer	BRASS	433537-02	1	1	1	1						
5	Screw-Grounding	BRASS	433304-02	1	1	1	1						
6	Top Frame	GS	3A3741-01	1	1	1	1						
6a	T2 Screw	4x8	7P31-0408	4	4	4	4						
7	Side Frame	GS	3A2782-01	1	1	1	1						
7a	T2 Screw	4x8	7P31-0408	2	2	2	2						
8	Bulb Holder	-	3A3903-01	1	1	-							
	Bin Control Switch Mount		3A4463-01			1	1						
9	Silicone Hose	L=380	773013812	1	1	-							
		L=325	7730-1114			1	-						
10	Thumbscrew	SS, ABS	415949G10	1	1	7	7						
11	Base Cover	SS	321525G01	1	1	1	1						
12	Top Insulation	PP	215730G01	1	1	1	1						
13	Front Insulation	PP	215731G01	1	1	1	1						
14	Side Panel (R)	SS	2A2117G01	1	1	1	1						
14a	T2 Screw	4x8, SS	7P32-0408	1	1	1	1						
15	Control Box Cover	GS	3A2476-01	1	1	1	1						
15a	T2 Screw	4x8	7P31-0408	1	1	1	1						
16	Gasket	L=554	4A0808L02	1	1	1	1						
17	Barrier-Insulation	GS	4A1167-01	1	1	1	1						
17a	T2 Screw	4x8	7P31-0408	2	2	2	2						
18	Strap	-	435487-01	1	1	1	1						
19	Thumbscrew	SS, ABS	415949G11	2	2	-							
20	Capillary Ring	-	425307-01	1	1	1	-						
			425307-02				1						
21	Bin Control	-	2A4393G01			1	1						

**A. Ice Cuber Assembly**  
**KM-515MRH**  
 S-0 to U-3



Title: **A. Ice Cuber Assembly** Model: **KM-515MRH**

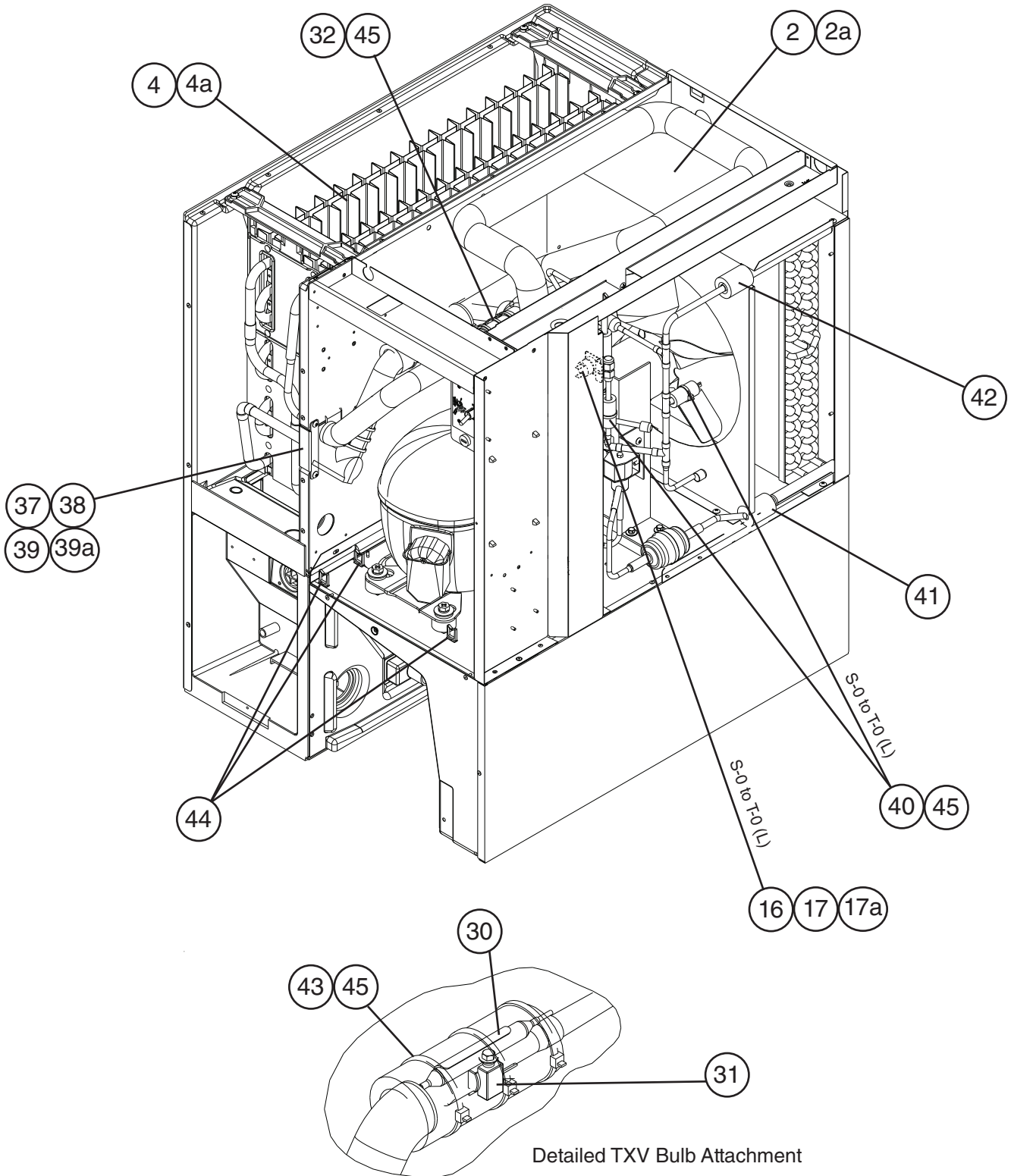
Index No.	Description	Material or Model Number	Part Number	Required Number									
				S-0 to T-1	U-1	U-2	U-3						
B	Refrigeration Circuit	-	1A1410A01	1	-								
			1A1641A01		1	1	1						
C	Water Circuit	-	1A0283A05	1	1	1	1						
D	Control Box Assembly	-	2A4374A02	1	1	-							
			2A4374A04			1	1						
D1	T2 Screw	4x8	7P31-0408	4	4	4	4						
E	Label Location	-	3A4599A01	1	1	-							
			3A5047A01			1	-						
			3A5563A01					1					
F	Front Panel Assembly	SS	2A2150G01	1	1	1	1						
F1	Truss Head Screw	4x8, SS	7C32-0408	1	1	1	1						
G	Top Panel Assembly	SS	3A3878A01	1	1	1	1						
1	Evaporator Case	-	1A0579G06	1	1	1	1						
2	Base	-	2A2146G14	1	1	-							
			2A4319G12			1	1						
2a	FT Screw	4x8	7F31-0408	7	7	7	7						
3	Frame	-	3A2503G01	1	1	1	1						
3a	Truss Head Screw	4x8, SS	7C32-0408	1	1	1	1						
3b	Truss Head Screw	4x25, SS	7C32-0425	2	2	2	2						
4	Square Washer	BRASS	433537-02	2	2	2	2						
5	Screw-Grounding	BRASS	433304-02	2	2	2	2						
6	Top Frame	GS	3A3741-01	1	1	1	1						
6a	T2 Screw	4x8	7P31-0408	4	4	4	4						
7	Side Frame	GS	3A2782-01	1	1	1	1						
7a	T2 Screw	4x8	7P31-0408	2	2	2	2						
8	Bulb Holder	-	3A3903-01	1	1	-							
	Bin Control Switch Mount		3A4463-01			1	1						
9	Strap	-	435487-01	1	1	1	1						
10	Thumbscrew	SS, ABS	415949G10	1	1	7	7						
11	Base Cover	SS	321525G01	1	1	1	1						
12	Top Insulation	PP	215730G01	1	1	1	1						
13	Front Insulation	PP	215731G01	1	1	1	1						
14	Side Panel (R)	SS	2A2117G01	1	1	1	1						
14a	T2 Screw	4x8, SS	7P32-0408	1	1	1	1						
15	Control Box Cover	-	3A2476-01	1	1	1	1						
15a	T2 Screw	4x8	7P31-0408	1	1	1	1						
16	Gasket	L=554	4A0808L02	1	1	1	1						
17	Silicone Hose	L=380	7730I3812	1	1	-							
		L=325	7730-1114			1	-						
18	Junction Box Cover	GS	433410-01	1	1	1	1						
18a	T2 Screw	4x8	7P31-0408	1	1	1	1						
19	Barrier-Insulation	GS	4A1167-01	1	1	1	1						
19a	T2 Screw	4x8	7P31-0408	2	2	2	2						
20	Bushing	SR-30-1	420472-03	1	1	1	1						
21	Thumbscrew	SS, ABS	415949G11	2	2	-							
22	Capillary Ring	-	425307-01	1	1	1	-						
			425307-02				1						
23	Bin Control	-	2A4393G01			1	1						

## B. Refrigeration Circuit

1/2

KM-515MAH

S-0 to U-3

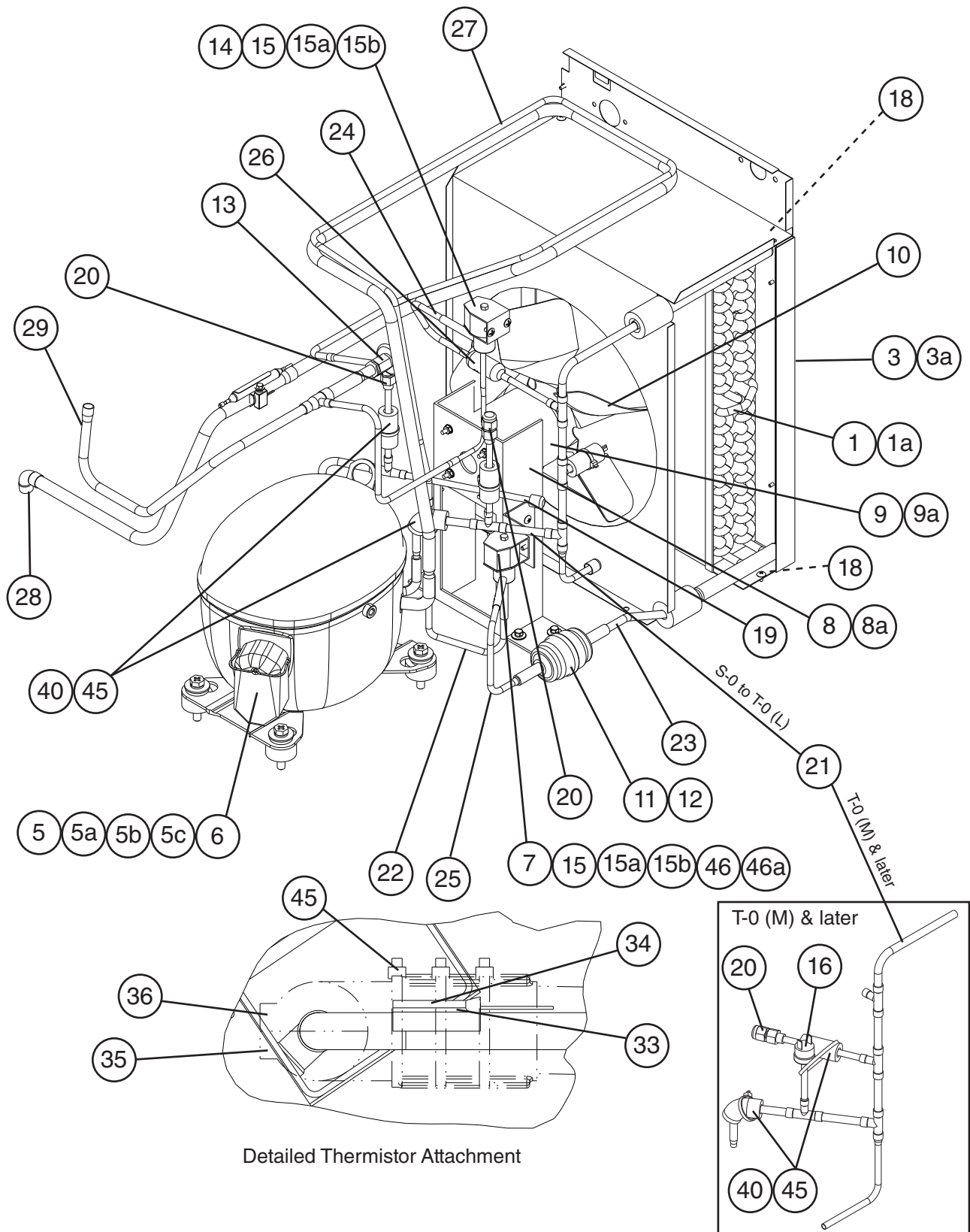


# B. Refrigeration Circuit

2/2

KM-515MAH

S-0 to U-3



Title: **B. Refrigeration Circuit** Model: **KM-515MAH**

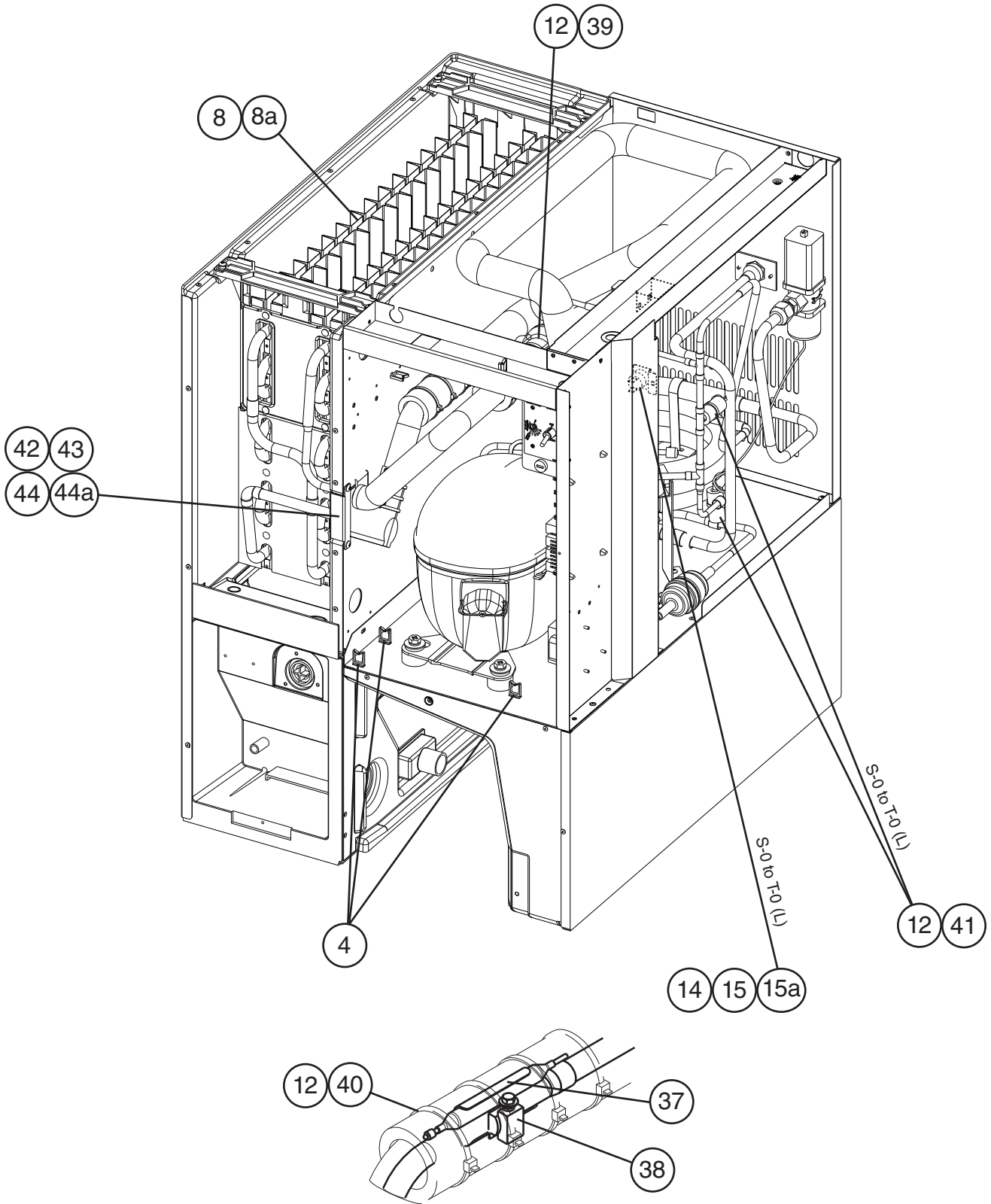
Index No.	Description	Material or Model Number	Part Number	Required Number										
				S-0 (A-L)	T-0 (M) to U-3									
1	Condenser	-	2A3756-01	1	1									
1a	T2 Screw	4x8	7P31-0408	2	2									
2	Shroud	GS	2A3760-01	1	1									
2a	T2 Screw	4x8	7P31-0408	5	5									
3	Barrier	GS	433693-04	1	1									
3a	T2 Screw	4x8	7P31-0408	2	2									
4	Evaporator	-	106492G01	1	1									
4a	T2 Screw	4x16, SS	7P32-0416	4	4									
5	Compressor	RST55C1E-CAA-202	4A4376-01	1	1									
5a	Bolt	8x45	437889-01	4	4									
5b	Spacer	-	4A2595-01	4	4									
5c	Grommet	-	4A2593-01	4	4									
6	Protector	-	4A2634-02	1	1									
7	Valve Body-Liquid Line	-	4A3276-01	1	1									
8	Fan Motor Bracket	GS	3A3859-01	1	1									
8a	Hex Head Bolt W/Washer (LF)	5x12	7B0130512	4	4									
9	Fan Motor	5KCP84DFK148S	4A3158-01	1	1									
9a	Self-locking Nut	NO. 8-32	7N2110832	4	4									
10	Fan Blade	AD10EECW40	4A3959-01	1	1									
11	Drier	C-03E117	4A2666-01	1	1									
12	Nylon Tie	-	8911-0301	1	1									
13	Expansion Valve	HFE-10NHDU-4	4A4008-01	1	1									
14	Valve Body-Hot Gas	-	4A3978-01	1	1									
15	Coil-Valve		4A3277-01	2	2									
15a	Bolt	4x6	4A3277F01	2	2									
15b	Truss Head Screw	4x8	7C31-0408	4	4									
16	Pressure Switch	ACB-1UB09	433441-07	1	-									
		ACB-1UB44	463180-04		1									
17	Pressure Switch Bracket	-	434938-01	1	-									
17a	T2 Screw	4x8	7P31-0408	1	-									
18	Gasket	L=245	4A0808L02	2	2									
19	Copper Tube Access Valve	COPPER	3A3999G01	1	1									
20	Access Valve	-	457729-01	2	2									
21	Copper Tube (A)-High Side	COPPER	2A4385G02	1	-									
			2A4808G2		1									
22	Copper Tube (B)-High Side	COPPER	4A3962-01	1	1									
23	Copper Tube (C)-High Side	COPPER	4A3961-01	1	1									
24	Copper Tube (D)-High Side	COPPER	3A3855G01	1	1									
25	Copper Tube (E)-High Side	COPPER	3A3905-01	1	1									
26	Strainer (included in item 24: 3A3855G01)	-	441569-01	1	1									
27	Heat Exchanger	-	2A4382G01	1	1									
28	Elbow	COPPER	417395-03	1	1									
29	Copper Tube-Hot Gas	COPPER	2A4099G01	1	1									
30	Holder/Expansion Valve-3/8	SS	3A0107-01	1	1									
31	Clamp	SS	443461-02	1	1									

Title: **B. Refrigeration Circuit** Model: **KM-515MAH**

Index No.	Description	Material or Model Number	Part Number	Required Number									
				S-0 T-0 (A-L)	T-0 (M) to U-3								
32	Expansion Valve Cover	PE FOAM	3A0944-01	1	1								
33	Thermistor	-	429006-03	1	1								
34	Holder-Thermistor	COPPER	427430-01	1	1								
35	Insulation-Thermistor (A)	PE FOAM	439368-01	1	1								
36	Insulation-Thermistor (B)	PE FOAM	439368-02	1	1								
37	Rubber Insulation (A)	EPDM	3A1044-01	1	1								
38	Rubber Insulation (B)	EPDM	3A1045-01	1	1								
39	Insulation Holder	-	4A1550-01	1	1								
39a	T2 Screw	4x8, SS	7P32-0408	2	2								
40	Insulation Tube	L=40	7762-1020	4	3								
41	Insulation Tube	L=40	7762-1030	1	1								
42	Insulation Tube	L=40	7762-1630	1	1								
43	Insulation Tube	L=150	7762-2943	1	1								
44	Wire Saddle	VWS4238-C	4A0338-02	8	8								
45	Cable Tie	CV-200 (PLT-2M)	8911-0200	14	13								
46	Line Valve Bracket	-	4A4011-01	1	1								
46a	T2 Screw	4x8	7P31-0408	2	2								



**B. Refrigeration Circuit**  
**1/2**  
**KM-515MWH**  
S-0 to U-3



Detailed TXV Bulb Attachment

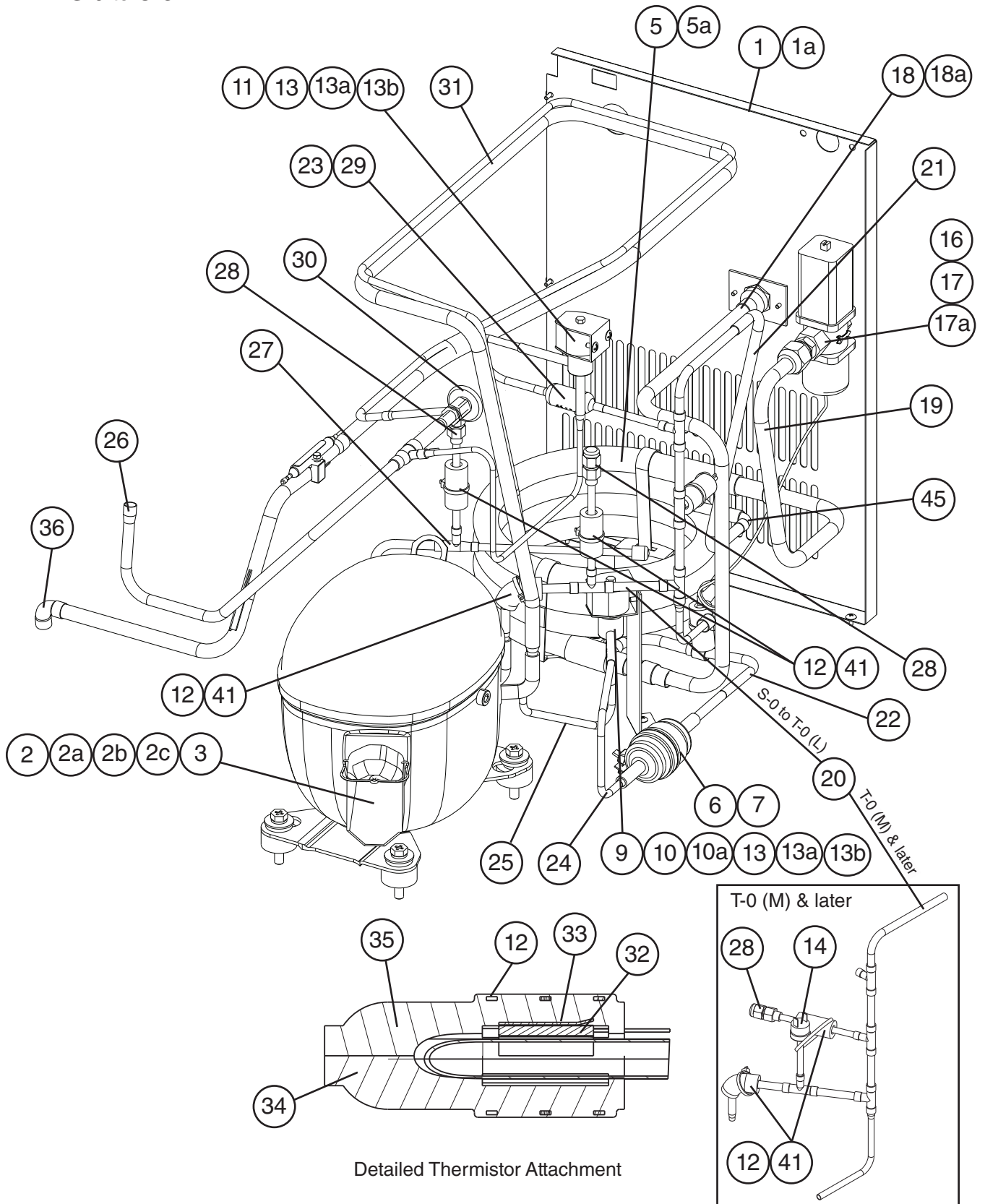


# B. Refrigeration Circuit

2/2

KM-515MWH

S-0 to U-3



Title: **B. Refrigeration Circuit** Model: **KM-515MWH**

Index No.	Description	Material or Model Number	Part Number	Required Number										
				S-0 T-0 (A-L)	T-0 (M) to U-3									
1	Rear Panel	GS	2A1426-01	1	1									
1a	T2 Screw	4x8	7P31-0408	5	5									
2	Compressor	RST55C1E-CAA	4A4376-01	1	1									
2a	Bolt	8x45	437889-01	4	4									
2b	Spacer	-	4A2595-01	4	4									
2c	Grommet	-	4A2593-01	4	4									
3	Protector	-	4A2634-02	1	1									
4	Wire Saddle	-	4A0338-02	8	8									
5	Condenser-Water-Cooled	HS-0160	2A2359G01	1	1									
5a	Hex Head Bolt W/Washer (LF)	5x10	7B0130510	2	2									
6	Drier	C-03E117	4A2666-01	1	1									
7	Nylon Tie	NYLON	8911-0301	1	1									
8	Evaporator	-	106492G01	1	1									
8a	T2 Screw	4x16, SS	7P32-0416	4	4									
9	Valve Body-Liquid Line	-	4A3276-01	1	1									
10	Valve Bracket	-	436893-01	1	1									
10a	T2 Screw	4x8	7P31-0408	2	2									
11	Valve Body-Hot Gas	-	4A3978-01	1	1									
12	Cable Tie	PLT-2M	8911-0200	15	14									
13	Coil-Valve	AMS-C12HDU-3	4A3277-01	2	2									
13a	Bolt	-	4A3277F01	2	2									
13b	Truss Head Screw	4x8	7C31-0408	4	4									
14	Pressure Switch	ACB-2UB04	433441-05	1	-									
		ACB-1UB43	463180-05		1									
15	Pressure Switch Bracket	GS	434938-01	1	-									
15a	T2 Screw	4x8	7P31-0408	1	-									
16	Male Connector	-	4A1087-01	1	1									
17	Water Regulator	V46DA-6	4A0911-06	1	1									
17a	Truss Head Screw	4x6	7C31-0406	2	2									
18	Copper Tube (A)-Water Circuit	COPPER	3A1251G01	1	1									
18a	T2 Screw	4x8	7P31-0408	2	2									
19	Copper Tube (B)-Water Circuit	COPPER	4A2681G01	1	1									
20	Copper Tube (A)-High Side	COPPER	2A4385G02	1	-									
			2A4808G02		1									
21	Copper Tube (B)-High Side	COPPER	3A2219-01	1	1									
22	Copper Tube (C)-High Side	COPPER	4A2682G01	1	1									
23	Copper Tube (D)-High Side	COPPER	3A3855G01	1	1									
24	Copper Tube (E)-High Side	COPPER	3A3541-01	1	1									
25	Copper Tube (F)-High Side	COPPER	4A3971-01	1	1									
26	Copper Tube-Hot Gas	COPPER	2A4387G01	1	1									
27	Copper Tube-Access Valve	-	3A3999G01	1	1									
28	Access Valve	TCJ-2F20NHDU-1	457729-01	2	2									
29	Strainer (Included in item 23: 3A3855G01)	-	441569-01	1	1									
30	Expansion Valve	HFE-10NHDU-4	4A4008-01	1	1									

Title: **B. Refrigeration Circuit** Model: **KM-515MWH**

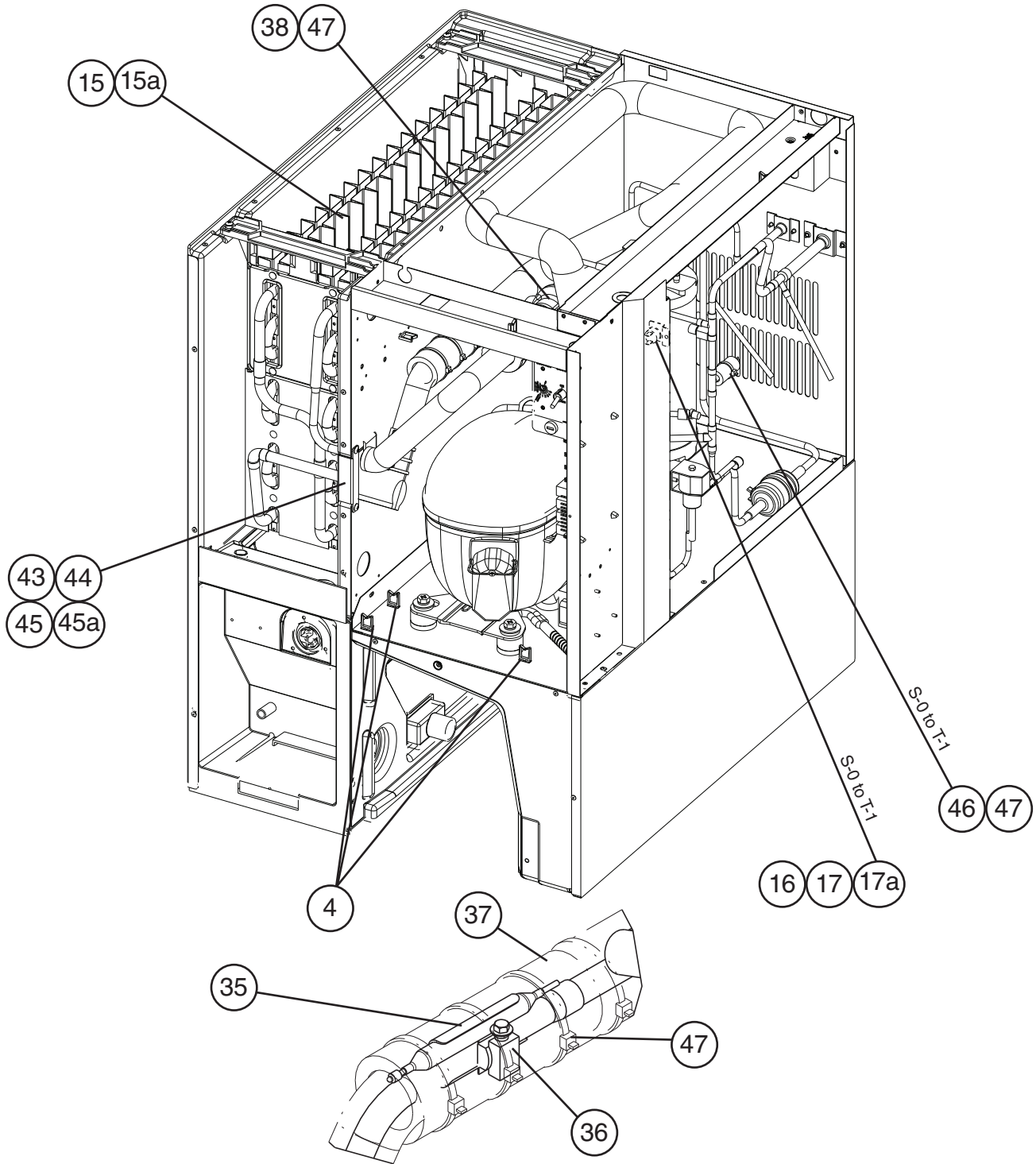
Index No.	Description	Material or Model Number	Part Number	Required Number									
				S-0 T-0 (A-L)	T-0 (M) to U-3								
31	Heat Exchanger	-	2A4382G01	1	1								
32	Thermistor	-	429006-03	1	1								
33	Holder-Thermistor	-	427430-01	1	1								
34	Insulation-Thermistor (A)	PE FOAM	439368-01	1	1								
35	Insulation-Thermistor (B)	PE FOAM	439368-02	1	1								
36	Elbow	COPPER	417395-03	1	1								
37	Holder/Expansion Valve-3/8	-	3A0107-01	1	1								
38	Clamp	SS	443461-02	1	1								
39	Expansion Valve Cover	PE FOAM	3A0944-01	1	1								
40	Insulation Tube	L=150	7762-2943	1	1								
41	Insulation Tube	L=40	7762-1020	5	4								
42	Rubber Insulation (A)	EPDM	3A1044-01	1	1								
43	Rubber Insulation (B)	EPDM	3A1045-01	1	1								
44	Insulation Holder	-	4A1550-01	1	1								
44a	T2 Screw	4x8, SS	7P32-0408	2	2								
45	Elbow	-	417395-02	1	1								

## B. Refrigeration Circuit

1/2

KM-515MRH

S-0 to U-3



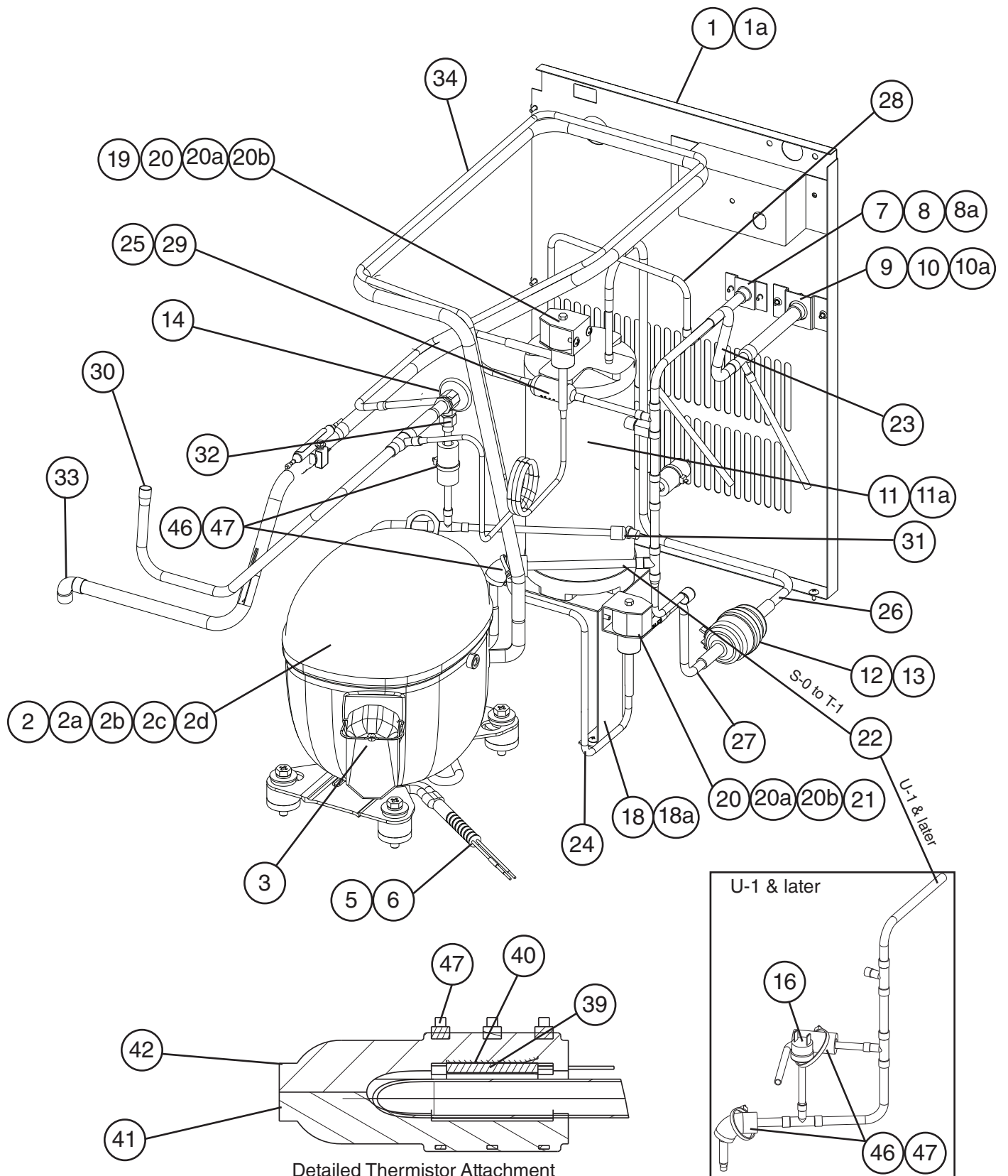
Detailed TXV Bulb Attachment

# B. Refrigeration Circuit

2/2

KM-515MRH

S-0 to U-3



Title: **B. Refrigeration Circuit** Model: **KM-515MRH**

Index No.	Description	Material or Model Number	Part Number	Required Number								
				S-0 T-0	T-1	U-1 to U-3						
1	Rear Panel	GS	220468G03	1	1	1						
1a	T2 Screw	4x8	7P31-0408	5	5	5						
2	Compressor	RST55C1E-CAA-202	4A4376-01	1	1	1						
2a	Bolt	8x45	437889-01	4	4	4						
2b	Spacer	-	4A2595-01	4	4	4						
2c	Grommet	-	4A2593-01	4	4	4						
2d	Washer	-	4A4409-01	4	-							
3	Protector	-	4A2634-02	1	1	1						
4	Wire Saddle	VWS4238-C	4A0338-02	9	9	9						
5	Crankcase Heater	-	3A4663-01	1	1	1						
6	Retainer	-	4A4412-01	1	1	1						
7	Coupling	-	4A3972G01	1	1	1						
8	Tube Holder-S	-	438246-01	1	1	1						
8a	T2 Screw	4x8	7P31-0408	2	2	2						
9	Coupling	-	434136G01	1	1	1						
10	Tube Holder-L	-	438245-01	1	1	1						
10a	T2 Screw	4x8	7P31-0408	2	2	2						
11	Receiver Tank	RR KN WP450	437596-01	1	1	1						
11a	Hex Head Bolt W/Washer (LF)	5x10, SS	7B0130510	3	3	3						
12	Drier	C-03E117	4A2666-01	1	1	1						
13	Nylon Tie	-	8911-0301	1	1	1						
14	Expansion Valve	HFE-10NHD-2	4A1414-01	1	1	1						
15	Evaporator	-	106492G01	1	1	1						
15a	T2 Screw	4x16, SS	7P32-0416	4	4	4						
16	Pressure Switch	ACB-1UB09	433441-07	1	1	-						
		ACB-1UB44	463180-04			1						
17	Pressure Switch Bracket	GS	434938-01	1	1	-						
17a	T2 Screw	4x8	7P31-0408	1	1	-						
18	Valve Bracket	-	436893-01	1	1	1						
18a	T2 Screw	4x8	7P31-0408	2	2	2						
19	Valve Body-Hot Gas	70	4A3978-01	1	1	1						
20	Coil-Valve	AMS-C12HDU-3	4A3277-01	2	2	2						
20a	Bolt	4x6	4A3277F01	2	2	2						
20b	Truss Head Screw	4x8	7C31-0408	4	4	4						
21	Valve Body-Liquid Line	-	4A3276-01	1	1	1						
22	Copper Tube (A)-High Side	COPPER	2A4385G01	1	1	-						
			2A4808G01			1						
23	Copper Tube (B)-High Side	COPPER	3A3867G01	1	1	1						
24	Copper Tube (C)-High Side	COPPER	3A3973-01	1	1	1						
25	Copper Tube (D)-High Side	COPPER	3A3855G01	1	1	1						
26	Copper Tube (E)-High Side	COPPER	332445-01	1	1	1						
27	Copper Tube (F)-High Side	COPPER	4A2768-01	1	1	1						
28	Copper Tube (G)-High Side	COPPER	3A3868G01	1	1	1						
29	Strainer (Included in item 25: 3A3855G01)	-	441569-01	1	1	1						

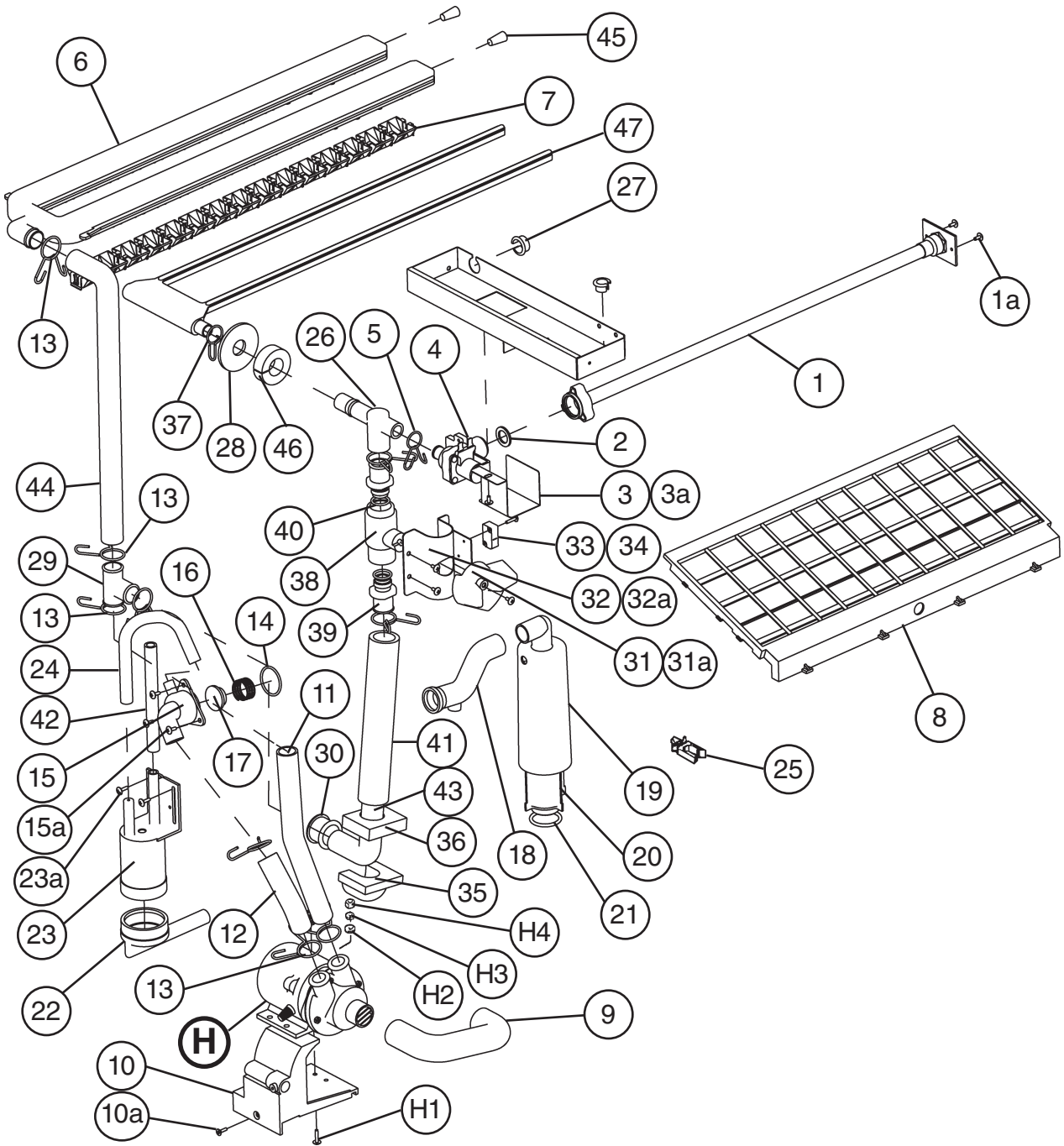
Title: **B. Refrigeration Circuit** Model: **KM-515MRH**

Index No.	Description	Material or Model Number	Part Number	Required Number										
				S-0 T-0	T-1	U-1 to U-3								
30	Copper Tube-Hot Gas	COPPER	2A4400G01	1	1	1								
31	Copper Tube-Access Valve	COPPER	3A3999G01	1	1	1								
32	Access Valve	-	457729-01	1	1	1								
33	Elbow	COPPER	417395-03	1	1	1								
34	Heat Exchanger	-	2A4382G01	1	1	1								
35	Holder-Expansion Valve-3/8	SS	3A0107-01	1	1	1								
36	Clamp	-	443461-02	1	1	1								
37	Insulation Tube	L=150	7762-2943	1	1	1								
38	Expansion Valve Cover	PE FOAM	3A0944-01	1	1	1								
39	Thermistor	-	429006-03	1	1	1								
40	Holder-Thermistor	COPPER	427430-01	1	1	1								
41	Insulation-Thermistor (A)	PE FOAM	439368-01	1	1	1								
42	Insulation-Thermistor (B)	PE FOAM	439368-02	1	1	1								
43	Rubber Insulation (A)	EPDM	3A1044-01	1	1	1								
44	Rubber Insulation (B)	EPDM	3A1045-01	1	1	1								
45	Insulation Holder	-	4A1550-01	1	1	1								
45a	T2 Screw	4x8, SS	7P32-0408	2	2	2								
46	Insulation Tube	L=40	7762-1020	3	3	3								
47	Cable Tie	-	8911-0200	13	13	13								

### C. Water Circuit

#### KM-515MAH, KM-515MWH, KM-515MRH

S-0 to U-3



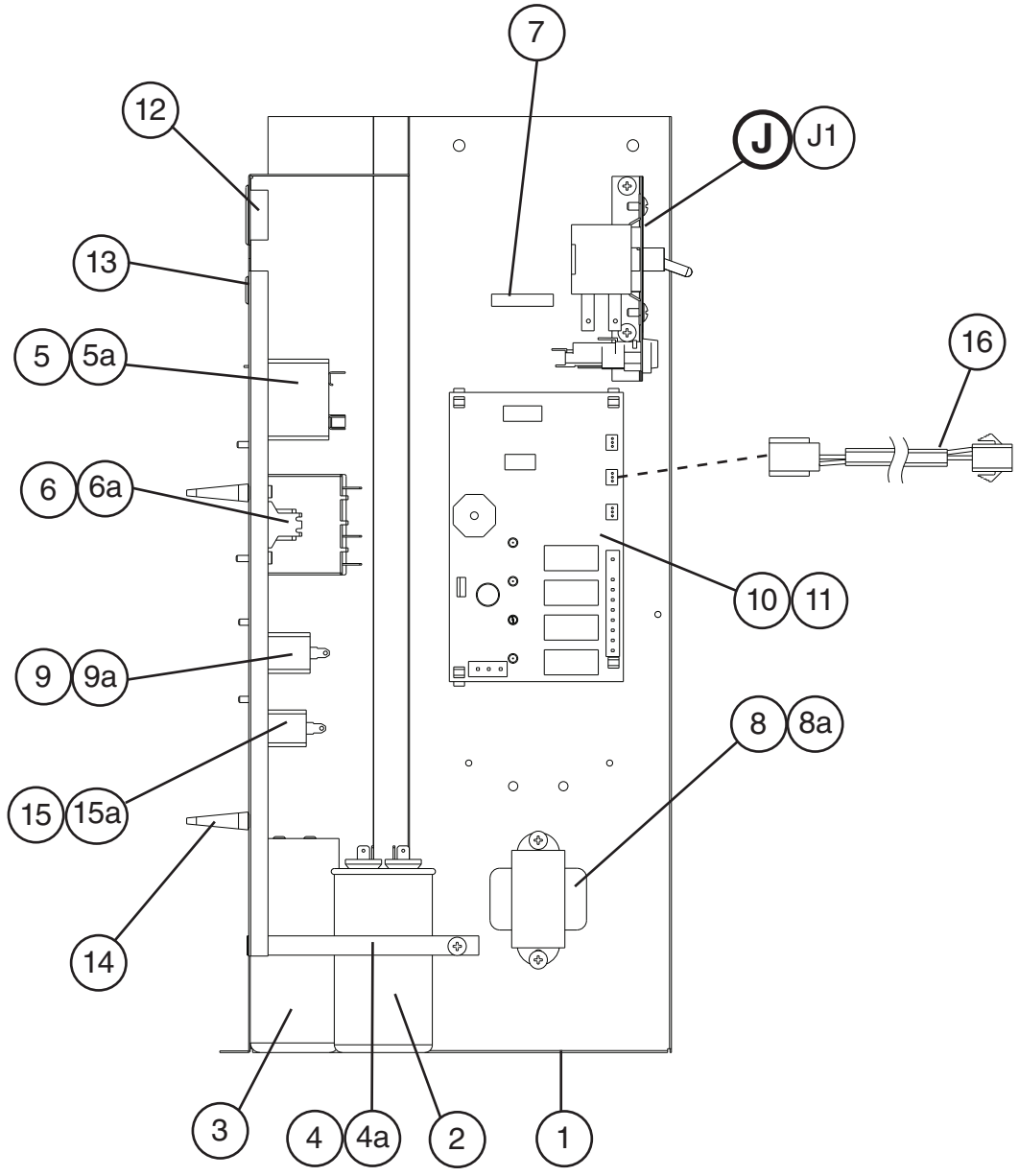


Title: **C. Water Circuit** Model: **KM-515MAH, KM-515MWH, KM-515MRH**

Index No.	Description	Material or Model Number	Part Number	Required Number									
				S-0 to U-3									
H	Pump Motor Assembly	HS-0176	3A2638A03	1									
H1	Truss Head Screw	4x16, SS	7C32-0416	1									
H2	Flat Washer	M4, SS	7W22-0400	1									
H3	Split Lock Washer	M4, SS	7L22-0400	1									
H4	Hex Nut	M4, SS	7N12-0400	1									
1	Water Supply Pipe	COPPER	4A0768G04	1									
1a	T2 Screw	4x8	7P31-0408	2									
2	Rubber Gasket	NR	413854-03	1									
3	Water Valve Bracket	GS	321443-01	1									
3a	T2 Screw	4x8	7P31-0408	1									
4	Water Valve	J248-072	3U0111-04	1									
5	Hose Clamp	SS, 18MM	427443-05	1									
6	Spray Tube	PE	1A0260-02	1									
7	Spray Guide (A)	PE	208586-01	6									
8	Cube Guide	ABS	212088-01	1									
9	Suction Hose	EPDM	433466-01	1									
10	Pump Motor Bracket	PC	211408-01	1									
10a	Flat Head Screw	4x12, SS	7F32-0412	1									
11	Vinyl Hose	L=250	7716-2025	1									
12	Vinyl Hose	L=110	7716-2025	1									
13	Hose Clamp	SS, 25MM	427443-03	9									
14	"O" Ring	1AG35	7611-G035	1									
15	Valve Housing-Drain	ABS	321001-01	1									
15a	T2 Screw	4x10, SS	7P32-0410	3									
16	Spring	SS	322110-01	1									
17	Valve Seat	EPDM	433705-01	1									
18	Drain Hose	SANTO-PRENE	433468-01	1									
19	Overflow Cap	PE	321002-01	1									
20	Overflow Pipe	ABS	430722-03	1									
21	"O" Ring	EPDM	4A1234-01	1									
22	Connector-Float Switch	EPDM	426799-01	1									
23	Float Switch	-	4A3624-01	1									
23a	T2 Screw	4x12, SS	7P32-0412	2									
24	Silicone Hose	L=140	773013896	1									
25	Wire Saddle	VWS4238-C	4A0338-02	4									
26	Tee	SANTO-PRENE	4A0177-01	1									
27	Bushing	OCB-750	428394-01	1									
28	Flange	EPDM	439267-01	1									
29	Distributor	EPDM	432426-01	1									
30	Rubber Ring	EPDM	439236-01	1									
31	Handle	JH1352	215383-01	1									
31a	T2 Screw	4x8	7P31-0408	1									
32	Valve Holder	GS	3A1178-01	1									
32a	FT Screw	4x8	7F31-0408	3									

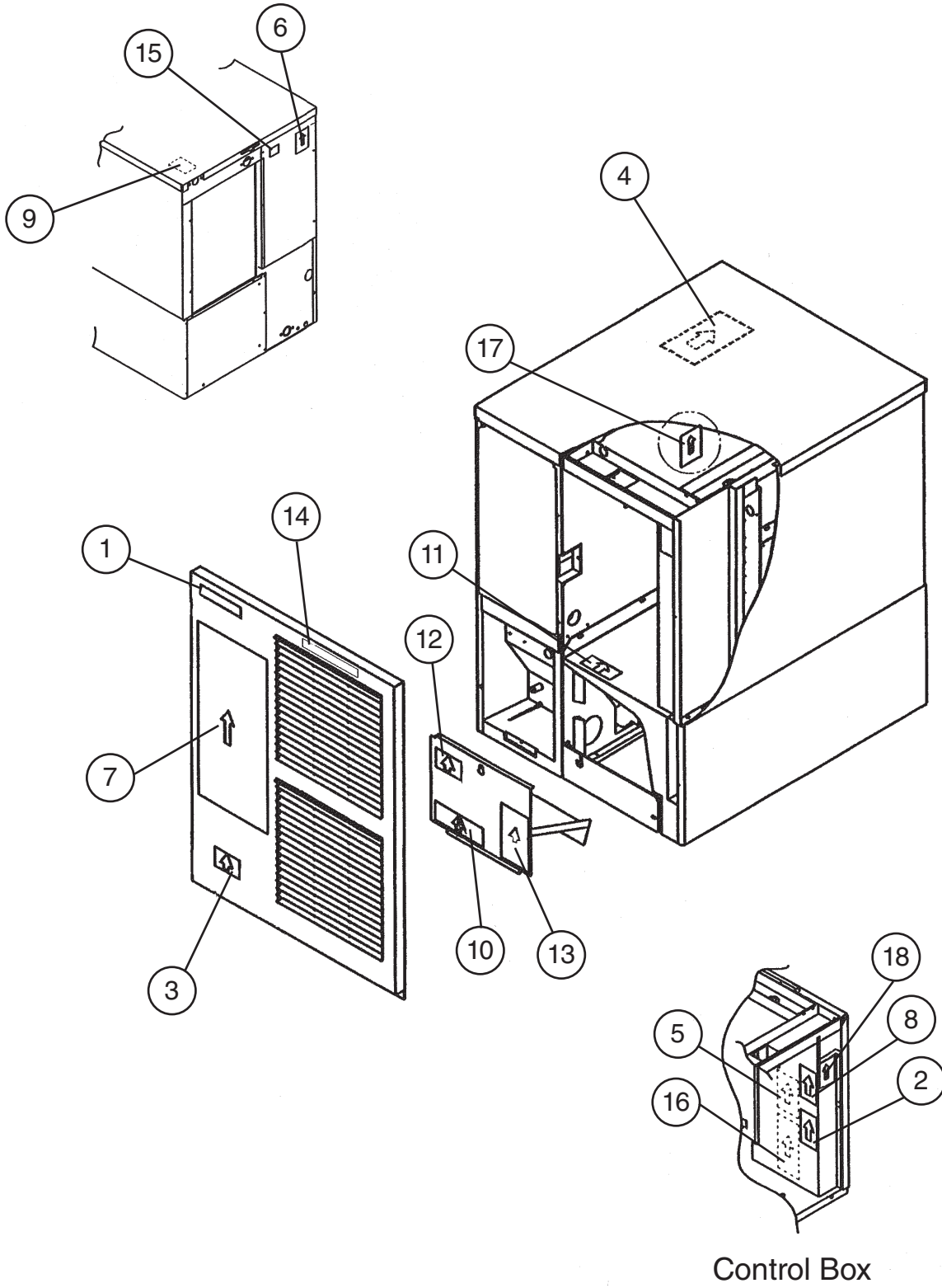
Title: <b>C. Water Circuit</b> Model: <b>KM-515MAH, KM-515MWH, KM-515MRH</b>												
Index No.	Description	Material or Model Number	Part Number	S-0 to U-3	Required Number							
33	Microswitch	-	4A2546-01	1								
34	Tapping Screw	3x14	431415-02	2								
35	Corner Insulation (A)	PE FOAM	439376-01	1								
36	Corner Insulation (B)	PE FOAM	439392-01	1								
37	Hose Clamp	SS, 20 MM	427443-06	1								
38	Ball Valve (Included in S-0761)	PVC	439293-01	1								
39	Male Adaptor (Included in S-0761)	ABS	325826-01	2								
40	"O" Ring (Included in S-0761)	1AP18	7611-P018	2								
41	Insulation Tube	L=190	7762-2636	1								
42	Silicone Hose	L=140	773013812	1								
43	Rubber Hose (D)	EPDM	4A1551-04	1								
44	Rubber Hose (C)	SANTO-PRENE	4A1551-03	1								
45	Plug	EPDM	4A0176-01	2								
46	Insulation (E)	PE FOAM	4A0392-01	1								
47	Water Supply Tube	PE	2A0079-01	1								

**D. Control Box Assembly**  
**KM-515MAH, KM-515MWH, KM-515MRH**  
S-0 to U-3



Title: <b>D. Control Box Assembly</b> Model: <b>KM-515MAH, KM-515MWH, KM-515MRH</b>												
Index No.	Description	Material or Model Number	Part Number	Required Number								
				S-0 to U-1	U-2 U-3							
J	Control Assembly	-	4A2911A01	1	-							
			4A4612A01		1							
J1	T2 Screw	4x8	7P31-0408	2	2							
1	Control Box	-	2A1851-01	1	-							
			2A4865-01		1							
2	Capacitor-Run	35MFD, 440VAC	3A2005-12	1	1							
3	Capacitor-Starting	243-292MFD, 165V	3A0076-20	1	1							
4	Strap	GS	4A2262-03	1	1							
4a	T2 Screw	4x8	7P31-0408	1	1							
5	Starter	3ARR3CT5M5	4A1107-11	1	1							
5a	T2 Screw	4x8	7P31-0408	1	1							
6	Magnetic Contactor	VC-20	428393-01	1	1							
6a	T2 Screw	4x8	7P31-0408	2	2							
7	Fuse (Spare)	-	4A0893-07	1	1							
8	Transformer	26D285H	3A0172-01	1	1							
8a	T2 Screw	4x8	7P31-0408	2	2							
9	Capacitor-Pump Motor	5.5MFD, 250VAC	443192-03	1	1							
9a	T2 Screw	4x10	7P31-0410	1	1							
10	Control Board	"E" Board	2A1410-01	1	-							
		"G" Board	2A3792-01		1							
11	Board Support	CBLS37-M	4A0336-03	4	4							
12	Bushing	SB-1093-15	420470-03	1	1							
13	Bushing	OCB-500	428394-02	1	1							
14	Clamp	-	4A2338-01	2	2							
15	Capacitor-Fan Motor	<b>KM-515MAH</b> 5MFD, 250VAC	443192-02	1	1							
15a	T2 Screw	<b>KM-515MAH</b> 4x10	7P31-0410	1	1							
16	Wire Harness	-	4A2200G04		1							

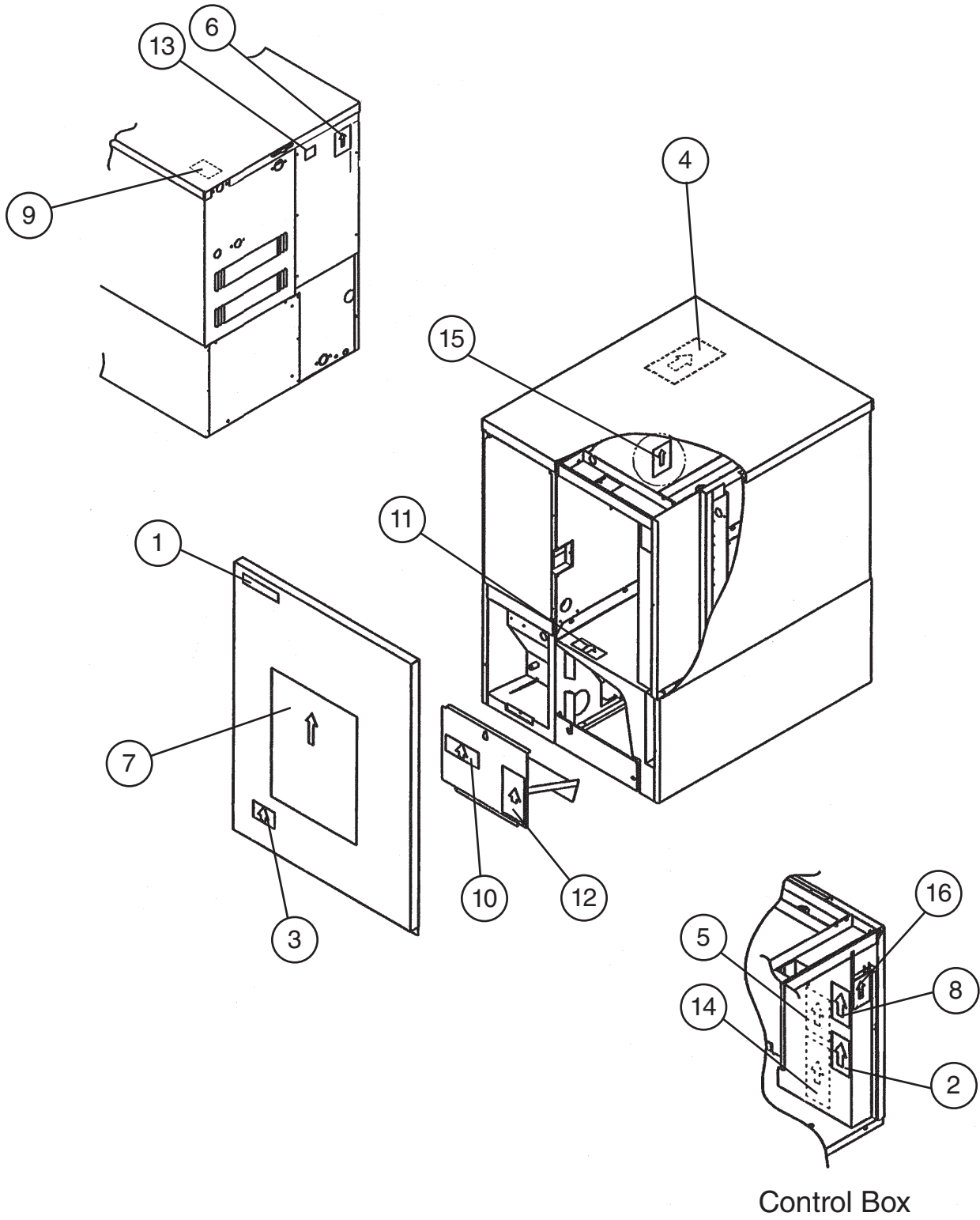
**E. Label Location**  
**KM-515MAH**  
S-0 to U-3



Title: **E. Label Location** Model: **KM-515MAH**

Index No.	Description	Material or Model Number	Part Number	Required Number									
				S-0 to U-1	U-2	U-3							
1	Emblem	PETP FILM	4A0560-01	1	1	1							
2	Label-Alarm	-	4A3517-01	1	1	-							
			4A4737-01			1							
3	Label-Penguin-HA (R)	PETP FILM	4A0526-01	1	1	1							
4	Maintenance Label	PVC FILM	3A4649-01	1	1	-							
			3A5404-01			1							
5	Wiring Label	PVC FILM	3A4595-01	1	-								
			3A5036-01		1	1							
6	Nameplate	PES FILM	2A4372-01	1	1	1							
7	Instruction Sheet	PAPER	2A4371-01	1	-								
8	Manual Label	PVC FILM	446564-01	1	-								
			4A4615-01		1	1							
9	Tag-Warning: Electrical Connection	PAPER	435005-01	1	1	-							
			4A4766-01			1							
10	Operation Label-Valve	PVC FILM	439541-01	1	1	-							
			4A4828-01			1							
11	Label-R404A	PES FILM	4A0960-01	1	1	1							
12	Caution Label (F)	PVC FILM	439146-01	1	1	-							
	Warning Label (F)		4A4767-01			1							
13	Caution Label (H)	PVC FILM	439148-01	1	1	-							
	Warning Label (H)		4A4795-01			1							
14	Label-Air Filter	PETP FILM	426177-01	1	1	1							
15	Instruction Label	PVC FILM	444575-01	1	1	1							
16	Label-Control Board	PVC FILM	3A2220-01	1	-								
			3A4799-01		1	1							
17	Rating Label	-	2A4373-01	1	1	1							
18	Label-Fuse	-	4A2817-01	1	1	-							
			4A4829-01			1							

**E. Label Location**  
**KM-515MWH**  
S-0 to U-3

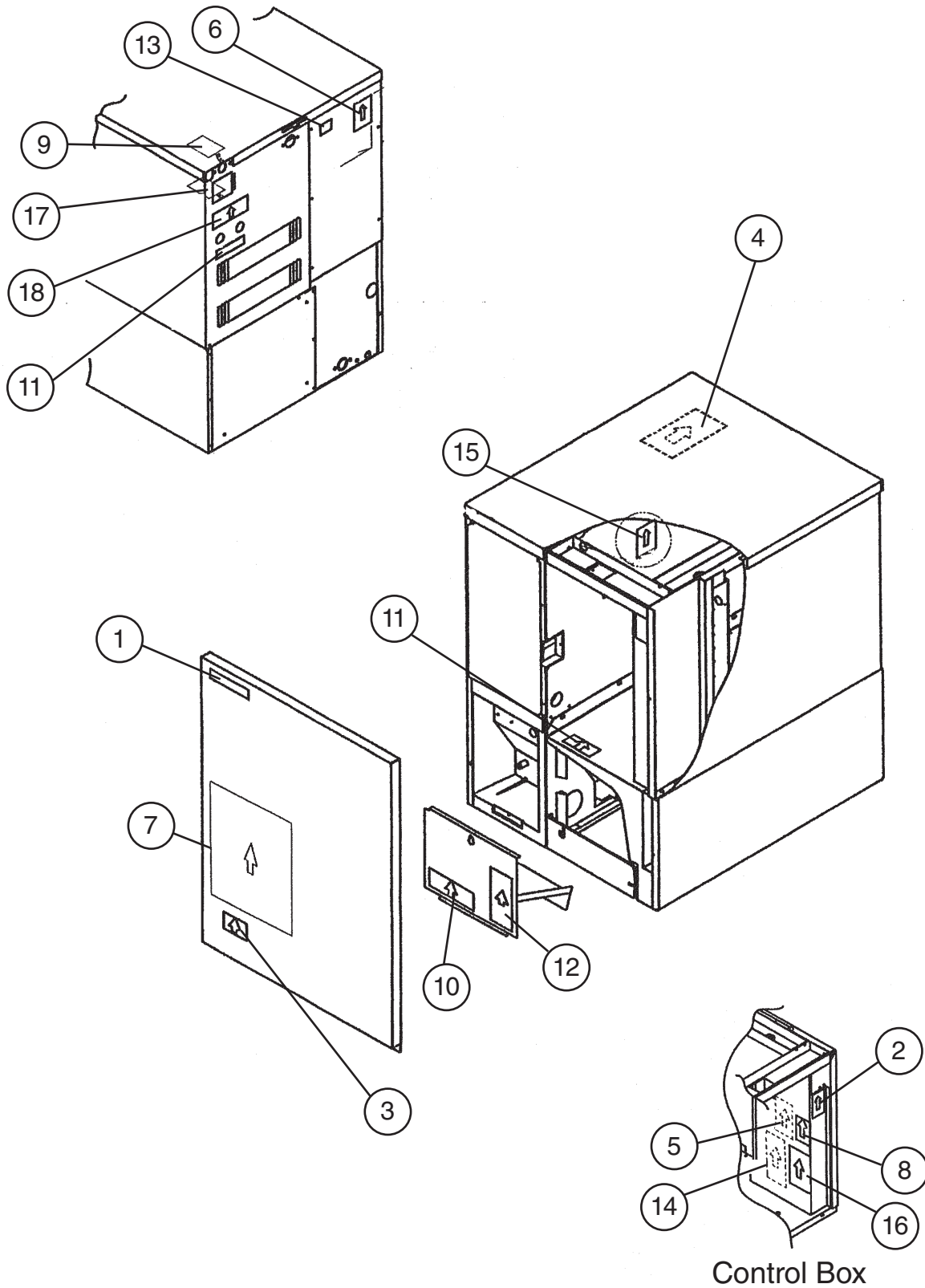


Title: **E. Label Location** Model: **KM-515MWH**

Index No.	Description	Material or Model Number	Part Number	Required Number									
				S-0 to U-1	U-2	U-3							
1	Emblem	PETP FILM	4A0560-01	1	1	1							
2	Label-Alarm	-	4A3517-01	1	1	-							
			4A4737-01			1							
3	Label-Penguin-HA (R)	PETP FILM	4A0526-01	1	1	1							
4	Maintenance Label	PVC FILM	3A4649-01	1	1	-							
			3A5404-01			1							
5	Wiring Label	PVC FILM	3A4595-01	1	-								
			3A5036-01		1	1							
6	Nameplate	PES FILM	2A4372-02	1	1	1							
7	Instruction Sheet	PAPER	2A4371-01	1	-								
8	Manual Label	PVC FILM	446564-01	1	-								
			4A4615-01		1	1							
9	Tag-Warning: Electrical Connection	PAPER	435005-01	1	1	-							
			4A4766-01			1							
10	Operation Label-Valve	PVC FILM	439541-01	1	1	-							
			4A4828-01			1							
11	Label-R404A	PES FILM	4A0960-01	1	1	1							
12	Caution Label (H)	PVC FILM	439148-01	1	1	-							
	Warning Label (H)		4A4795-01			1							
13	Instruction Label	PVC FILM	444575-01	1	1	1							
14	Label-Control Board	PVC FILM	3A2220-01	1	-								
			3A4799-01		1	1							
15	Rating Label	-	2A4373-02	1	1	1							
16	Label-Fuse	-	4A2817-01	1	1	-							
			4A4829-01			1							



**E. Label Location**  
**KM-515MRH**  
 S-0 to U-3



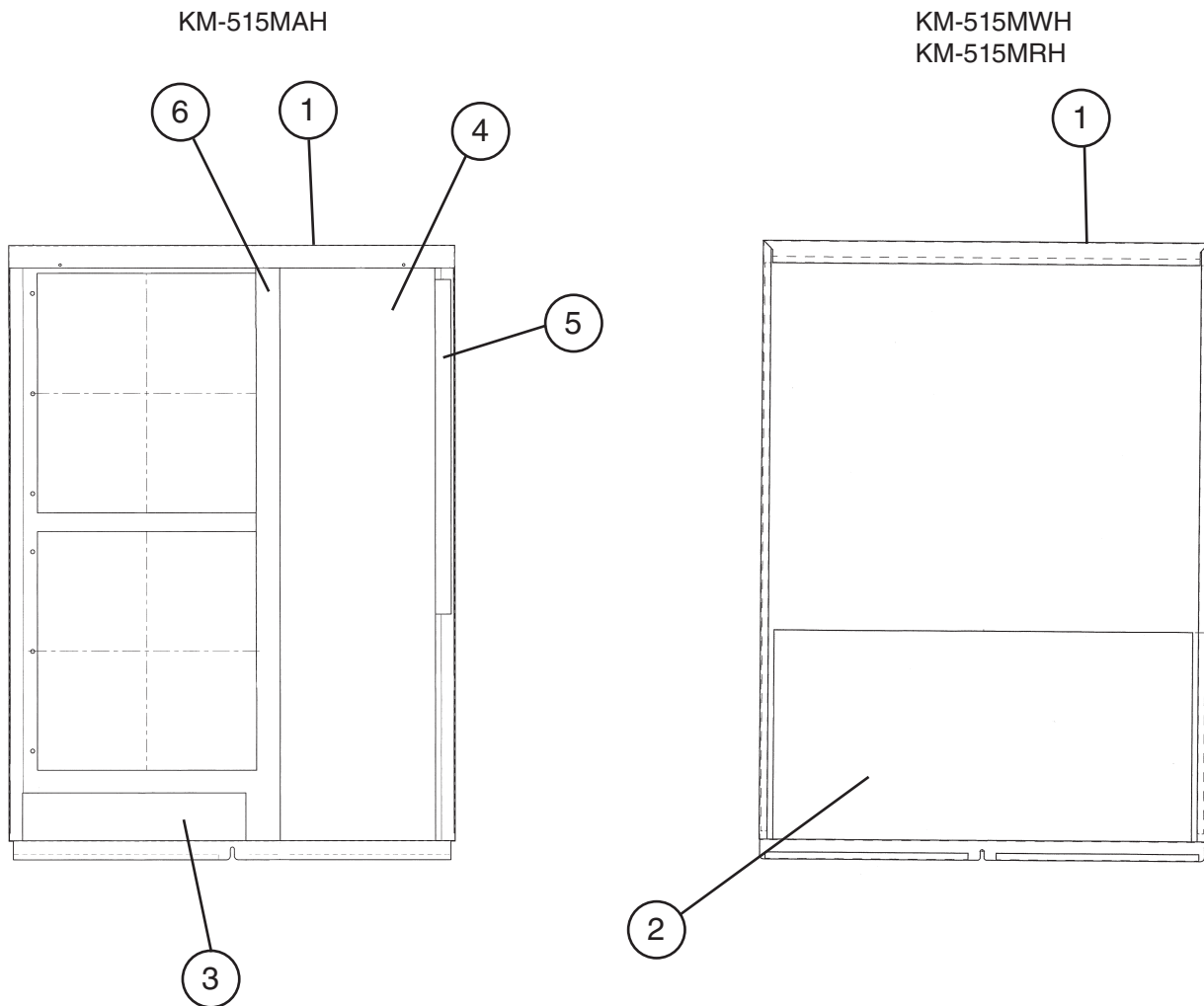
Title: **E. Label Location** Model: **KM-515MRH**

Index No.	Description	Material or Model Number	Part Number	Required Number									
				S-0 to U-1	U-2	U-3							
1	Emblem	PETP FILM	4A0560-01	1	1	1							
2	Label-Fuse	-	4A2817-01	1	1	-							
			4A4829-01			1							
3	Label-Penguin-HA (R)	PETP FILM	4A0526-01	1	1	1							
4	Maintenance Label	PVC FILM	3A4649-01	1	1	-							
			3A5404-01			1							
5	Wiring Label	PVC FILM	3A4596-01	1	-								
			3A5042-01		1	1							
6	Nameplate	PES FILM	2A4372-03	1	1	1							
7	Instruction Sheet	PAPER	2A4371-01	1	-								
8	Manual Label	PVC FILM	446564-01	1	-								
			4A4615-01		1	1							
9	Tag-Warning: Electrical Connection	PAPER	435005-01	1	1	-							
			4A4766-01			1							
10	Operation Label-Valve	PVC FILM	439541-01	1	1	-							
			4A4828-01			1							
11	Label-R404A	PES FILM	4A0960-01	2	2	2							
12	Caution Label (H)	PVC FILM	439148-01	1	1	-							
	Warning Label (H)		4A4795-01			1							
13	Instruction Label	PVC FILM	444575-01	1	1	1							
14	Label-Control Board	PVC FILM	3A2220-01	1	-								
			3A4799-01		1	1							
15	Rating Label	PES FILM	2A4373-03	1	1	1							
16	Label-Alarm	-	4A3517-01	1	1	-							
			4A4737-01			1							
17	Tag-Fan Motor Leads	-	4A1494-01	1	1	-							
			4A4830-01			1							
18	Caution-Remote Label	-	4A1491-01	1	1	-							
	Warning-Remote Label		4A4831-01			1							

## F. Front Panel Assembly

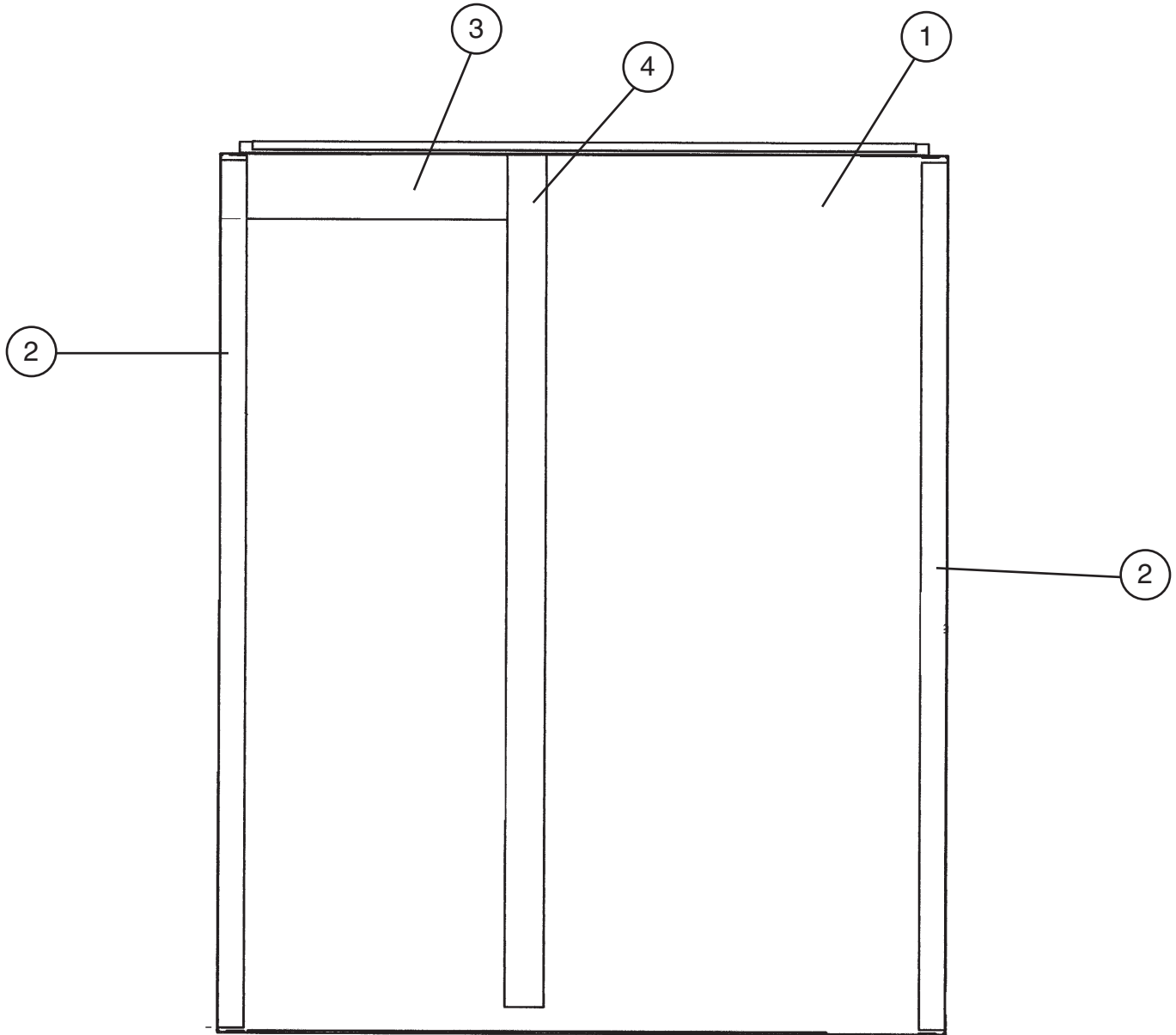
**KM-515MAH, KM-515MWH, KM-515MRH**

S-0 to U-3



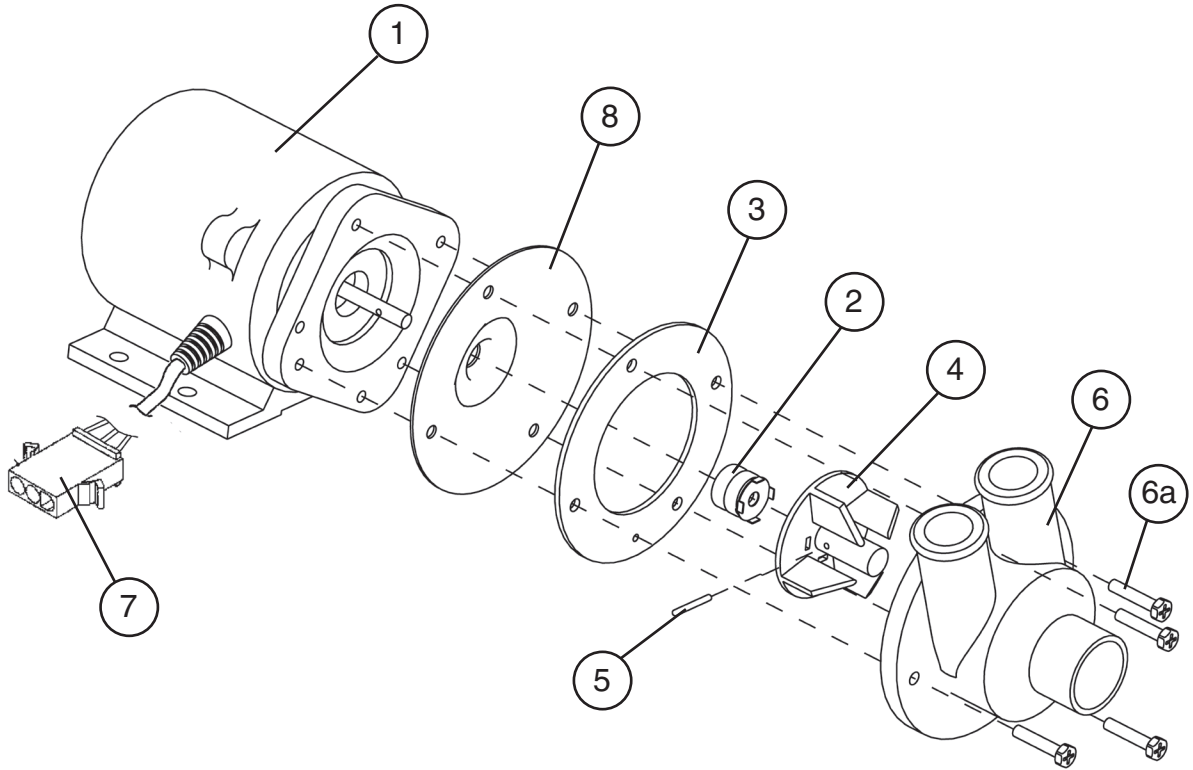
Title: F. Front Panel Assembly Model: KM-515MAH, KM-515MWH, KM-515MRH										
Index No.	Description	Material or Model Number	Part Number	Required Number						
				S-0 to U-3						
1	Front Panel	<b>KM-515MAH</b>	2A2130-04	1						
		<b>KM-515MWH, KM-515MRH</b>	2A2130-05	1						
2	Insulation (A)	<b>KM-515MWH, KM-515MRH</b>	4A2507-01	1						
3	Insulation (B)	<b>KM-515MAH</b>	4A1872-01	1						
4	Front Insulation (C)	<b>KM-515MAH</b>	3A3885-01	1						
5	Foam Seal	<b>KM-515MAH</b> L=420	4A1163L01	1						
6	Foam Seal	<b>KM-515MAH</b> L=530	4A1163L01	1						

**G. Top Panel Assembly**  
**KM-515MAH, KM-515MWH, KM-515MRH**  
 S-0 to U-3



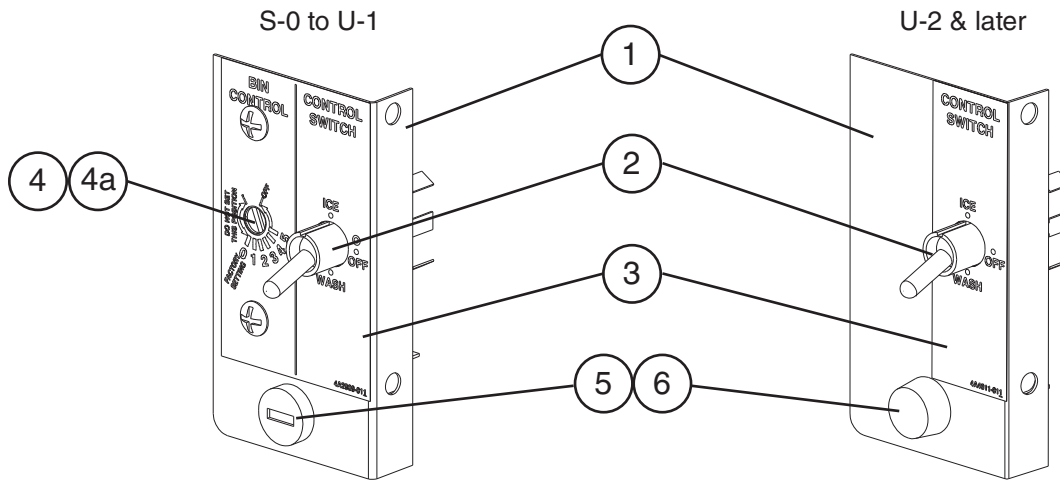
Title: <b>G. Top Panel Assembly</b> Model: <b>KM-515MAH, KM-515MWH, KM-515MRH</b>											
Index No.	Description	Material or Model Number	Part Number	S-0 to U-3	Required Number						
1	Top Panel	-	2A2133-01	1							
2	Gasket	-	427014-04	2							
3	Insulation	-	438012-01	1							
4	Foam Seal	L=658	4A1163L01	1							

**H. Pump Motor Assembly**  
**KM-515MAH, KM-515MWH, KM-515MRH**  
 S-0 to U-3



Title: H. Pump Motor Assembly Model: KM-515MAH, KM-515MWH, KM-515MRH															
Index No.	Description	Material or Model Number	Part Number	Required Number											
				S-0 to U-3											
1	Pump Motor	APTA9210WD1 120V	2A2758-01	1											
2	Mechanical Seal / R	HKU90-J9001	465627-01	1											
3	Pump Gasket	EPDM	4A2974-01	1											
4	Impeller	ABS	433522-01	1											
5	Pin	SS	4A0648-01	1											
6	Pump Housing	ABS	211409-01	1											
6a	Screw	4x20, Geomet 321coated SS	4A3871-01	4											
7	Plug Housing	-	412832-06	1											
8	Pump Flange	-	3A2988-01	1											

**J. Control Assembly**  
**KM-515MAH, KM-515MWH, KM-515MRH**  
 S-0 to U-3



Title: J. Control Assembly Model: KM-515MAH, KM-515MWH, KM-515MRH										
Index No.	Description	Material or Model Number	Part Number	Required Number						
				S-0 to U-1	U-2 U-3					
1	Control Box (C)	-	4A2816-01	1	-					
			4A4613-01		1					
2	Toggle Switch	8966K84	443119-01	1	1					
3	Control Label	-	4A2909-01	1	-					
			4A4611-01		1					
4	Thermostat	-	4A2879-01	1	-					
4a	Truss Head Screw	-	7C31-0408	2	-					
5	Fuse Holder	-	4A0892-01	1	-					
			4A3449-01		1					
6	Fuse (10A 250V)	AGC-10	4A0893-07	1	1					

**K. Accessories & Packaging**  
**KM-515MAH, KM-515MWH, KM-515MRH**  
 S-0 to U-3

Title: <b>K. Accessories &amp; Packaging</b> Model: <b>KM-515MAH, KM-515MWH, KM-515MRH</b>												
Index No.	Description	Material or Model Number	Part Number	Required Number								
				S-0 to U-3								
1	Instruction Manual	-	91A1MQ10B	1								
2	Universal Brace	GS	4A0363-01	2								
3	Hex Head Bolt	5x12, SS	7B0230512	4								
-	Packaging	-	2A3865A01									